

# MetronVIEW

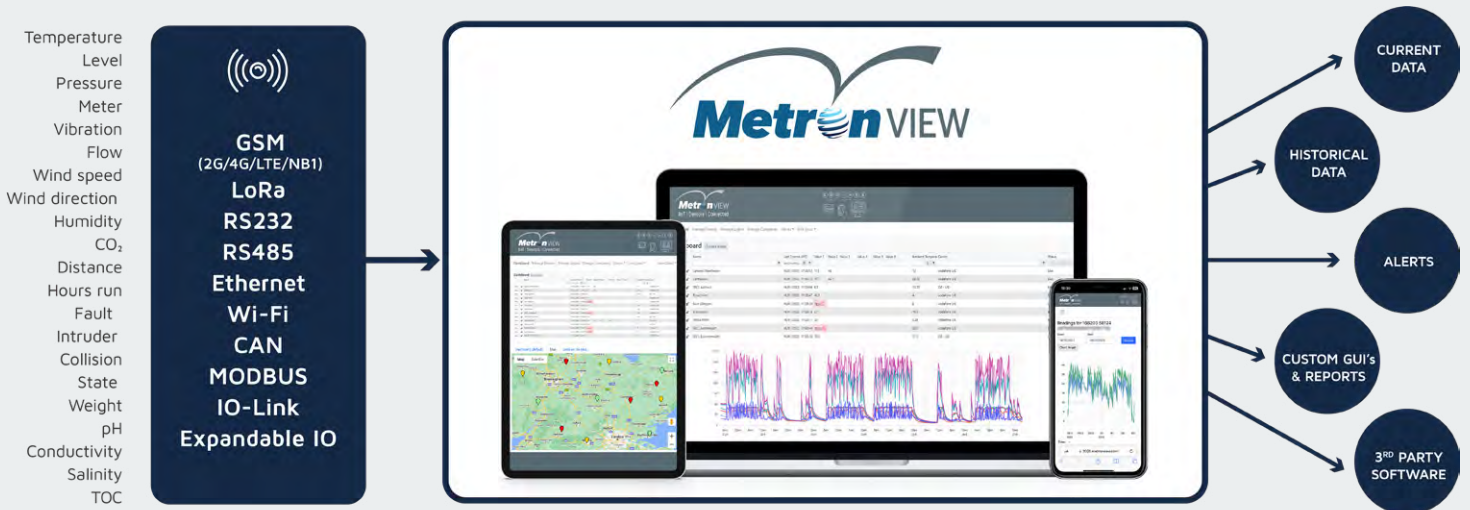
MetronView is PowTechnology's 'universal' IIoT platform, agile and responsive, collecting data from a vast array of sensors, machines and other devices.



It securely records and displays current and historic data via customisable dashboards, sends alarms, remotely manages and controls devices and performs mathematical and logical operations.

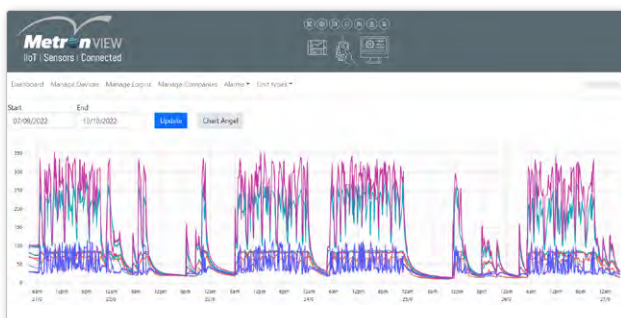


# MetronView Overview



PowTechnology have concentrated over 30 years' experience into creating our highly scalable MetronView platform, enabling customers, across a broad range of global industries, to get data flowing rapidly, as a first step towards their digital transformation and supporting them through to an international estate of connected assets.

- ▮ Data from sensors and other assets collected reliably from proprietary and third-party telemetry devices, RTUs, sensor gateways and IIoT routers.
- ▮ View data - anywhere, anytime - on graphs, tables or maps, with customisable views.
- ▮ View from any browser, on any device- computer, tablet, smartphone.
- ▮ Alarms sent to unlimited users and shown on dashboard, with acknowledgement and history functions.
- ▮ Perform calculations and logical operations on data, set up by PowTechnology or customers may be empowered via a low-code development area.
- ▮ Customisable with customer livery and logo.
- ▮ Remotely configure PowTechnology's Metron telemetry devices.
- ▮ API enables data integration to other software systems.
- ▮ PowTechnology are ISO27001 accredited.



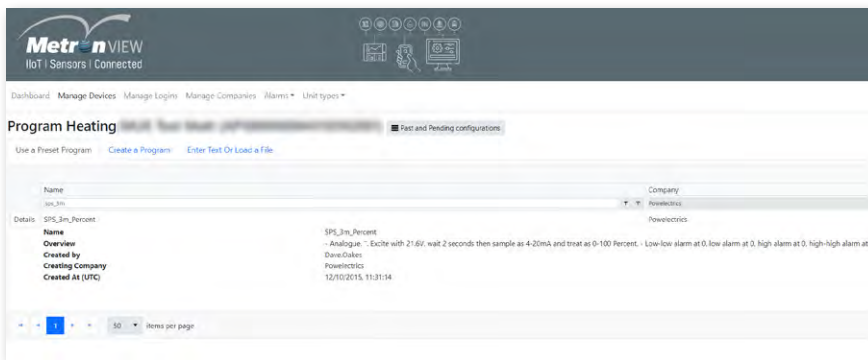
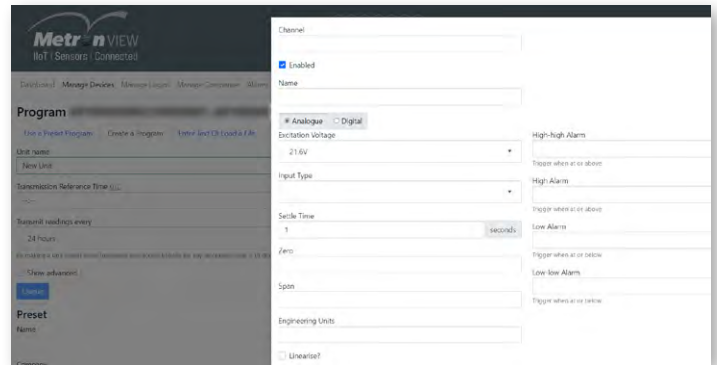
The image shows a screenshot of the MetronView dashboard in table view. The table lists various sensors and their status. The columns include Name, Last Connected, Value 1, Value 2, Value 3, Value 4, Value 5, Value 6, Ambient Temp, and Color. The table contains 12 rows of data.

Name	Last Connected	Value 1	Value 2	Value 3	Value 4	Value 5	Value 6	Ambient Temp	Color	Status
Liveries Manchester	16/01/2023 17:30:22	413	46					12	red	Live
Harlepool	16/01/2023 17:30:22	417	16.1					20.75	red	Live
MCL Anstid	16/01/2023 17:28:04	8.5						11.75	blue	Live
Royal Mile	16/01/2023 17:28:02	45.0						4	red	Live
Ray Chapple	16/01/2023 17:28:02	125						4	red	Live
Stonington	16/01/2023 17:28:02	227						105	red	Live
Wells Farm	16/01/2023 17:23:11	31						3.25	red	Live
MCL Anstidmouth	16/01/2023 17:06:49	5521						20.5	red	Live
MCL Boumenouth	16/01/2023 17:06:49	920						11.5	blue	Live
MCL Anstid	16/01/2023 17:06:38	329	16	115	123			17	orange	Live
MCL South	16/01/2023 16:58:59	2307						13	blue	Live
Compton Stone	16/01/2023 16:58:59	2442						14	orange	Live
Land Factory	16/01/2023 16:52:19	3113						2.75	red	Live
MCL Anstidmouth	16/01/2023 16:48:23	21						3.5	red	Live

# Web Based Data, Alarms and More

## Set-Up Wizard

Remotely configure devices using a simple, intuitive wizard to define units of measure, sensor types and more and save configurations for future use. No need for training or programming skills.

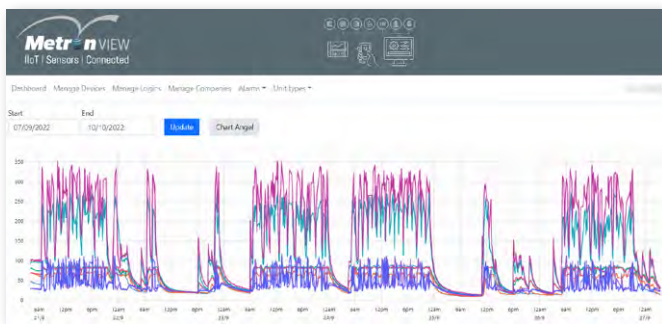


## Pre-Set Configurations

To make life easy, customers can keep a library of regularly used configurations and simply select one for simple configuration. e.g. Pre-set configurations for specific tank dimensions. No need for coding skills or technical support.

## Alarms

Unlimited alarms to unlimited email addresses. Options for SMS. Get notifications for threshold breaches, lack of communications from a device, rate of change, and even battery voltage. Unit in alarm can be shown on dashboards and maps. Customised views can be created to display historical and active alarms and alarms can be acknowledged.



## Chart Angel

This fantastic feature, created in direct response to customer feedback, allows customers to plot data from several IOT devices on a single graph for easy identification of operational issues. Compare the performance of similar assets to identify anomalies.



## Manage Users and Hierarchy

Users can be set up within a hierarchy, so a user could see data and alerts for one sensor, a department, a site or all sites.

## Hover Function

Hover anywhere on the graph for exact readings of all channels at a point in time.

# Your IIoT Solution

PowTechnology offer over 30 years of experience delivering data to drive business decisions. We connect sensors to the cloud, generating efficiencies and informing management strategy.



Call it remote monitoring, digital transformation, telemetry, IoT, IIoT, M2M or Industry4.0... Here at PowTechnology, we can guide you through the solutions available to achieve your objectives.

Our proprietary Metron IIoT technology is robust and intuitive, proven and constantly evolving.

We can integrate with third-party instrumentation and software to develop bespoke solutions for any size of organisation.

We deliver solutions globally, in multiple sectors, including factory automation, fuel management, lubricants, utilities, power, transport, waste management, environment, chemicals, flood protection, construction, security, agriculture, bulk liquid and gas distribution and pumping.

## What can we do for you?