

# IIoT Solutions for Flood Protection

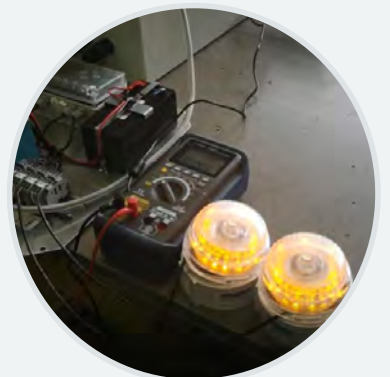
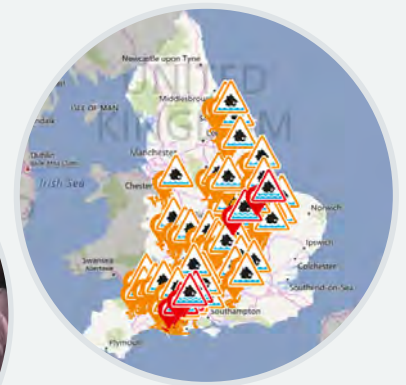
PowTechnology's telemetry solutions help people around the world manage the increasing number of 'extreme weather events' involving flooding.

PowTechnology's solutions help communities and organisations to protect people, infrastructure, agriculture, the environment, industrial processes and critical assets.

PowTechnology offers over 30 years of expertise and practical experience in instrumentation and digitalisation.

We deliver reliable data and alerts globally, using robust, proven remote monitoring technology and automatically control flood gates and pumps.

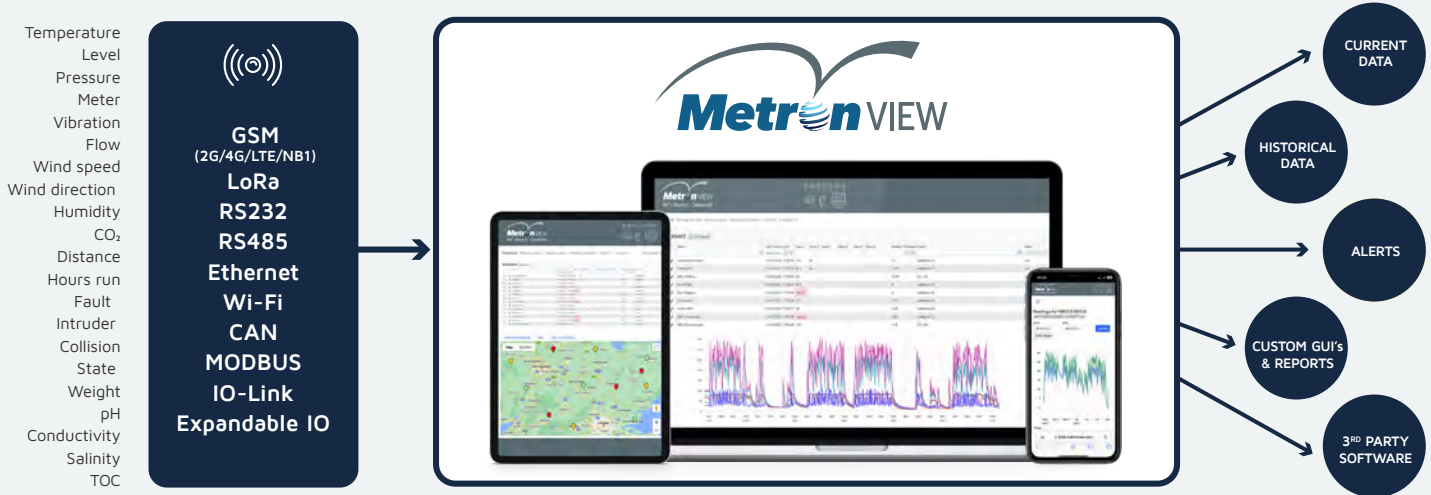
Early warning ... so you have time to act!



# IloT Solutions for Flood Protection

PowTechnology's well-proven, versatile MetronView cloud collects data from a vast array of sensors, machines and IloT devices. It gets your data flowing ... fast ... from your first step towards digital transformation to an international estate of connected assets!

Multiple power & communication options ensure connectivity in remote & rural environments.



## What Our Customers Say



The people of Cockermouth wanted us to reduce the risk of flooding to their homes and businesses... The barrier will complement the overall scheme, which is using a series of embankments, walls and gates to reduce the risk of flooding to 360 homes and 55 businesses in Cockermouth.

**KEITH RODDY**  
Environment Agency  
Project Manager

**CASE STUDY:**  
[Environment Agency](#)



PowTechnology's kit is just what we needed. Its robust, reliable and affordable. It came pre-configured to our requirements, can be reconfigured remotely and is intuitive to use. This telemetry is solar-powered and completely independent. When we have needed technical support, the response was great.

**SIMON DAVISON**  
Owner of Tournesol

**CASE STUDY:**  
[Tournesol](#)



We have used PowTechnology's Metron kit for several years now. It has been reliable and robust from the outset. Installation is intuitive and there is great tech support. Telemetry allows us to offer exceptional service to our customers and has helped us develop long-term partnerships.

**KARL ROYCE**  
Senior Quantity Surveyor  
at CG Godfrey

**CASE STUDY:**  
[CG Godfrey](#)



Metron monitoring kit offers a robust and reliable solution to remote monitoring. The adoption of Metron has removed the cost of employing staff to monitor and is safer too! The kit is hardy, easy to set-up, and the quality of the tech support is 5 star! The residential community is pleased with the early warning system and eager to introduce more automation.

**TObI SOWOLE**  
SpatialMatrix CTO

**CASE STUDY:**  
[SpatialMatrix](#)